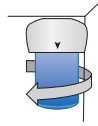


Installation Quick Start Guide for IPA-1

Important Installation Instructions

REMOVE

- 1** Locate your existing filter. Remove the old filter from the filter mount by turning it counterclockwise as shown in the picture.



PREPARE

- 2** Carefully remove the plug on top of the new filter (twisting it back and forth eases the plug out). Be careful not to remove the o-ring located under the plug. **IF THE O-RING IS MISSING, PLEASE CALL (970) 212.4100 FOR HELP.**



- 3** Check that the o-ring is seated evenly on top of the filter. The o-ring is required for a proper seal to the filter mount.



- 4** Your new filter is designed slightly different from the original filter it replaces. It has a notch on the top edge (see picture) and the o-ring inside the top. When the filter is placed in the filter mount it may require more effort to turn the filter because of the o-ring.

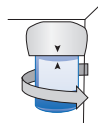


INSTALL

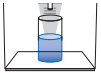
- 5** Place the top of the new filter into the refrigerator filter mount. Be sure that the START arrow on the filter label is aligned with arrow on the filter mount.



- 6** Twist the filter clockwise until the STOP arrow on the label is aligned with the arrow on the mount. The arrows must be aligned to activate the water valve located inside the filter mount. **IF THE VALVE IS NOT FULLY ACTIVATED THE WATER FLOW WILL BE SLOWER THAN NORMAL.** In some instances the partially activated valve may cause a "chattering" noise in the water line.



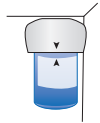
- 7** Check the water flow by filling a glass from the refrigerator water dispenser. If the water flow is slow or there is "chattering", remove and reinstall the filter making sure it is seated securely and the arrows are aligned. Check again. **PLEASE CALL (970) 212.4100 IF YOU NEED ASSISTANCE.**



NOTE: Initial flow rate may be slower than expected. Full flow rate should be restored within 24-36 hours.

FLUSH

- 8** Run water from the dispenser for 5 minutes at .5 gpm (about 2½ gallons) to clear the system and prevent sputtering.
- 9** Check the filter for any leaks. Inspect the mount area and filter bottom for any sign of moisture.



COMPLETE

- 10** Reset the "replace filter" light, if needed, by holding the reset button for three seconds.
- 11** Attach the included date label according to label instructions.
- 12** Replace filter every six months for best results.



Specifications

Flow Rate:	.5 gpm (1.89 lpm)
Operating Temperature:	33°-100°F (0.6°-38°C)
Operating Pressure:	30-100 psi (207-689 kPa)
Life:	6 Months or 300 gallons (1,136 liters)



This REF-IPA-1 is tested and Certified by NSF International against NSF/ANSI Standard 42 & 53, for the reduction of chlorine taste and odor, Tetrachlorethylene, Endrin, Carbon Tetrachloride, Trichlorobenzene, p-Dichlorobenzene. Refer to performance data sheet for complete list of claims.

Installation shall comply with applicable state and local regulations.

For further questions or assistance please call (970) 212.4100

Warning: To reduce the risk of property damage from water leakage, the filter bypass plug MUST be used when a filter replacement cartridge is not installed. For cold water applications only. Do not use with water that is microbiologically unsafe or of unknown quality without adequate disinfection before or after the system. Protect from freezing.

REPLACE FILTER EVERY 6 MONTHS, OR IF BAD TASTE OR ODOR OCCUR.

The risk associated with small parts can cause choking if swallowed. Keep children away from small parts during the replacement of the water filter