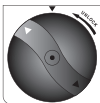


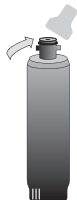
Installation Quick Start Guide for IPS-2

Important Installation Instructions

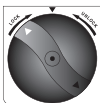
- 1** Locate existing filter and remove it by turning it counter clockwise as shown in the graphic.



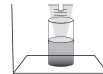
- 2** Holding new filter in your hands, carefully remove the packaging and sanitary end-cap from the new filter.



- 3** Insert the new filter into the refrigerator filter receptacle. Rotate the filter clockwise until the arrow on the bottom of the filter is aligned with the arrow on the refrigerator filter head. Ensure filter is fully installed in refrigerator head a full 1/4 turn. This is required to activate the internal valve inside the refrigerator. If the filter is not turned a full 1/4 turn the valve will not fully open and may cause the water flow to be slow, or even cause the valve to make a chattering noise during use.



- 4** Dispense water into glass looking for good water flow. If flow is slow, remove and reinstall filter ensuring that the filter is a full 1/4 turn.



NOTE: Initial flow rate may be slower than expected. Full flow rate should be restored within 24-36 hours.

- 5** Check filter one more time for any leaks.



- 6** Reset the filter replacement indicator light by holding down the Alarm (or Energy Saver) button for 3 seconds, or refer to your refrigerator owners manual.

Specifications

Flow Rate:	.5 gpm (1.89 lpm)
Operating Temperature:	33°-100°F (0.6°-38°C)
Operating Pressure:	30-100 psi (207-689 kPa)
Life:	6 Months or 300 gallons (1,136 liters)



This REF-IPS-2 is tested and Certified by NSF International against NSF/ANSI Standard 42 & 53, for the reduction of chlorine taste and odor, Tetrachlorethylene, Endrin, Carbon Tetrachloride, Trichlorobenzene, p-Dichlorobenzene. Refer to performance data sheet for complete list of claims.

Installation shall comply with applicable state and local regulations.

For further questions or assistance please call (970) 212.4100

Warning: To reduce the risk of property damage from water leakage, the filter bypass plug **MUST** be used when a filter replacement cartridge is not installed. For cold water applications only. Do not use with water that is microbiologically unsafe or of unknown quality without adequate disinfection before or after the system. Protect from freezing.

REPLACE FILTER EVERY 6 MONTHS, OR IF BAD TASTE OR ODOR OCCUR.

The risk associated with small parts can cause choking if swallowed. Keep children away from small parts during the replacement of the water filter